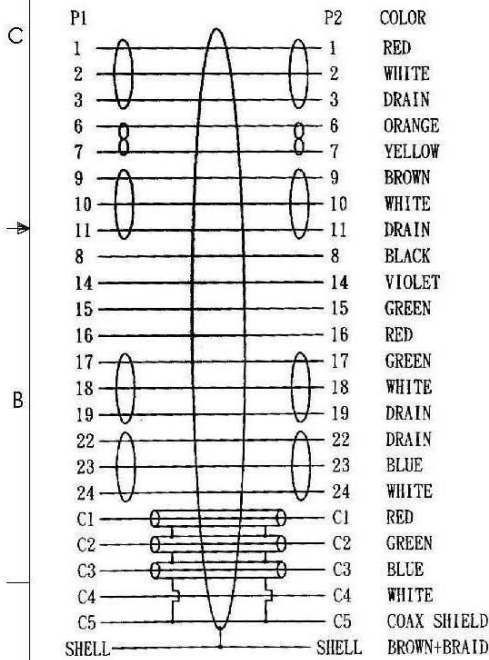
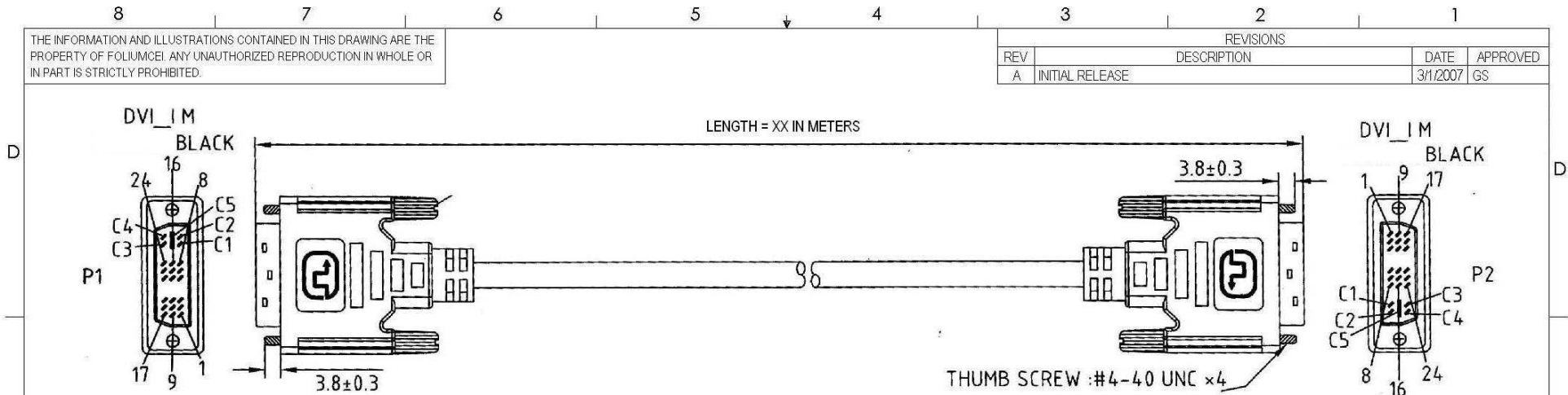
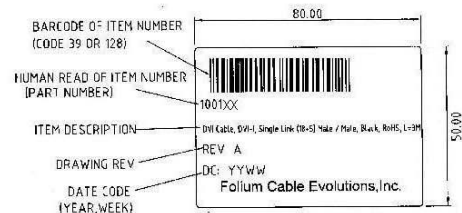


THE INFORMATION AND ILLUSTRATIONS CONTAINED IN THIS DRAWING ARE THE PROPERTY OF FOLIUMCEI. ANY UNAUTHORIZED REPRODUCTION IN WHOLE OR IN PART IS STRICTLY PROHIBITED.

REVISIONS			
REV	DESCRIPTION	DATE	APPROVED
A	INITIAL RELEASE	3/1/2007	GS



- NOTE:**
- CABLE: UL20276 {[30AWG(7/0.103)×1C+BRAID(16/5/0.1)]×3C+[28AWG(7/0.127)×1P+28AWG(7/0.127)×6C+AL/MY+BRAID(24/8/0.12)]} TIN JACKET: PVC
OD: 8.6±0.2mm COLOR: BLACK(NK-K01)
 - CONNECTOR:
P1&P2: DVI 23P: 18+5 DIGITAL/ANALOG MALE, GOLD FLASH CONTACT, NICKEL PLATED SHELL
 - SHIELD: P1&P2 COPPER FOIL 360° SOLDERED TO CONNECTOR SHELL & CABLE SHIELDING
 - HOOD: P1&P2: MOLDED TYPE, PVC 45P, COLOR: BLACK(NK-K01)
 - ELECTRICAL TEST:
(1) 100% OPEN SHORT & MIS WIRE TEST
(2) CONTACT RESISTANCE 3 OHM MAX
(3) INSULATION RESISTANCE 10M OHM MIN
(4) HI-POT VOLTAGE 300V DC/0.01SEC
 - PACKING: (1) EACH PC / POLYBAG+LABEL



UNLESS OTHERWISE SPECIFIED, DIMENSIONS ARE IN INCHES. TOLERANCES ARE:
 .X ±.1
 .XX ±.05
 .XXX ±.005
 CABLE LENGTH TOLERANCE
 <300' ±5% >300' ±2%

APPROVALS	DATE
DRAWN BY: SC	03/01/2007
CHECKED BY: MH	03/01/2007
APPROVED BY: GS	03/01/2007



ITEM DESCRIPTION		REV. A
DVI CABLE, DV-I, SINGLE-LINK (18+5), MALE/MALE		
SIZE A	ITEM NUMBER 1001XX where "XX" = Length in Meters	
SCALE: NONE CAD FILE: AUTHORIZED ACCESS ONLY SHEET 1 OF 1		